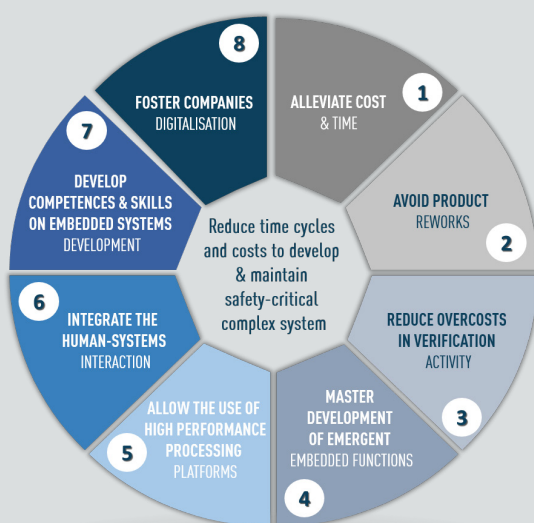


## SYSTEMS ENGINEERING

## TISECA - TOOLS INTEGRATION FOR SYSTEMS ENGINEERING AND COLLABORATIVE ARCHITECTURE

TISECA provides System, Hardware and Software Architects with toolchains aim to implement Agile system engineering in order to reduce development cycle and cost including in extended enterprise context.

### MARKET & NEEDS



Accelerate the development of your software intensive

### IRT OFFER

A shared digital lab to support:

- Fast trade-off and prototyping of System/SW/HW solutions
- Skill development on state of the art method and tools.
- Collaborative research projects on systems engineering
- Training courses for initial and lifelong learning

TISECA toolchains are deployed and supported by experts providing users with high level of training and customization.

TISECA is available to :

- IRT members (large and small industries, academia, schools/universities)
- External organisations

### IRT Saint Exupéry

B612 Building - 3 Rue Tarfaya  
31405 Toulouse Cedex 4 (France)  
Tel. +33 (0) 5 61 00 67 50  
Email: [contact@irt-saintexupery.com](mailto:contact@irt-saintexupery.com)

Arts et Métiers  
Campus de Bordeaux-Talence  
Esplanade des Arts et Métiers  
33405 Talence (France)

Sophia Antipolis Site:  
Inria - 2004 route des Lucioles  
BP 93 - 06902 Sophia Antipolis  
Cedex (france)

@irtSaintEx  
[www.irt-saintexupery.com](http://www.irt-saintexupery.com)

### PATRICK FARAIL

Head of Systems Engineering Competence Center  
Email: [patrick.farail@irt-saintexupery.com](mailto:patrick.farail@irt-saintexupery.com)  
Tel. 05 61 00 67 62



# DESIGN & VERIFICATION CAPABILITIES

## SYSTEMS/SOFTWARE/HARDWARE DEFINITION AND DESIGN :

- Elicitation et Integration of textual requirements with models
- System modeling,
- Equipment architecture modeling.
- Software architecture modeling
- Deployment of software on high performance computer : multi and many core.

## VERIFICATION AND VALIDATION :

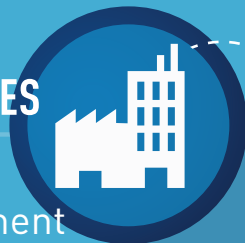
- Properties verification based on formal technics
- Design verification
- Co-simulation
- Safety modeling analysis and consistency with system model definition
- Execution platform virtualisation for architecture exploration and/or software verification
- Temporal analysis: Scheduling, determinism, performance prediction/estimation

## COLLABORATION INFRASTRUCTURE TO SUPPORT DIGITAL CONTINUITY :

- System data exchange and analysis inside an organization and/or in extended enterprise.
- Technical solutions to work on distributed team context

### INDUSTRIES

Skills development  
Research



SYSTEM/SW/HW  
**TISECA**



### RESEARCH

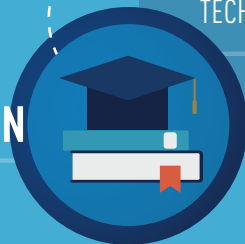
Industrial Platforms

TECHNO PROVIDERS

OPEN SOURCE

### EDUCATION

Training



BASED ON STANDARTS



### SMEs

Research & Development

## IRT Saint Exupéry

B612 Building - 3 Rue Tarfaya  
31405 Toulouse Cedex 4 (France)  
Tel. +33 (0) 5 61 00 67 50  
Email: [contact@irt-saintexupery.com](mailto:contact@irt-saintexupery.com)

Arts et Métiers  
Campus de Bordeaux-Talence  
Esplanade des Arts et Métiers  
33405 Talence (France)

Sophia Antipolis Site:  
Inria - 2004 route des Lucioles  
BP 93 - 06902 Sophia Antipolis  
Cedex (france)

@irtSaintEx  
[www.irt-saintexupery.com](http://www.irt-saintexupery.com)

## PATRICK FARAIL

Head of Systems Engineering Competence Center  
Email: [patrick.farail@irt-saintexupery.com](mailto:patrick.farail@irt-saintexupery.com)  
Tel. 05 61 00 67 62